

Wafer Butterfly Valve

Gear Operated

Model: SD-BVG25

The SD-BVG25 designed gear operated in accordance with BS EN 593 is a quarter turn rotary motion wafer style valve that is used to stop, regulate and start to flow with less pressure loss. Applicable for water supply, drainage and HVAC application.



Product Specifications:

Working Pressure	25 Bar
Working Temperature	-25°C - 125°C
Flange & Drilling	BS EN 1092-2 PN25
Top Flange	ISO 5211

Wafer Butterfly Valve

Gear Operated

Product Dimensions:

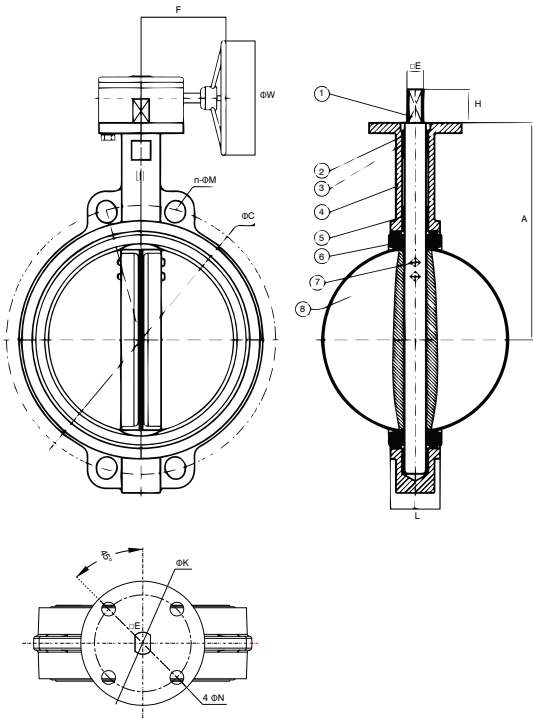
Ductile Iron Wafer Butterfly Valve - Gear Operated

DN	H	L	ΦC	n-ΦM	A	F	ΦW	E	ΦK	4-ΦN
200	38	60	310	12-Φ28	228	250	300	17	125	4-Φ12
250	38	68	370	12-Φ31	258	250	300	22	125	4-Φ12
300	38	78	430	16-Φ31	292	250	300	22	125	4-Φ12

NOTE: Dimensions are in mm.

Drawing Specification

No.	Part	Material
1	Shaft	Stainless Steel 431
2	Short Bushing	PTFE
3	O Ring	EPDM
4	Body	Ductile Iron
5	Long Bushing	PTFE
6	Sear	EPDM
7	Pin	Stainless Steel 316
8	Disc	CF8 (Stainless Steel)



Wafer Butterfly Valve

Gear Operated

Miscellaneous Data:

1. Ordering Information

Example: SD-BVG25-200

- SD-BVG25 is the part number
- (200) Size

2. Contact Information

For further information on any aspect of the SHIELD Valves products please contact below:

MIDDLE EAST & AFRICA	UNITED KINGDOM
Jebel Ali Free Zone, Dubai, UAE P.O Box: 61199 Tel.: +971 4 881 2070 Fax: +971 4 881 2198 Email: shieldme@shielglobal.com	Unit 3, Endeavor Drive, Basildon-Essex, SS3 14WF Tel.: +44 1708 377731 Fax: +44 1708347637 Email: shielduk@shielglobal.com